

Wisconsin Religious Collaborative Development Packet

2019 Jan-Jun Roadmap

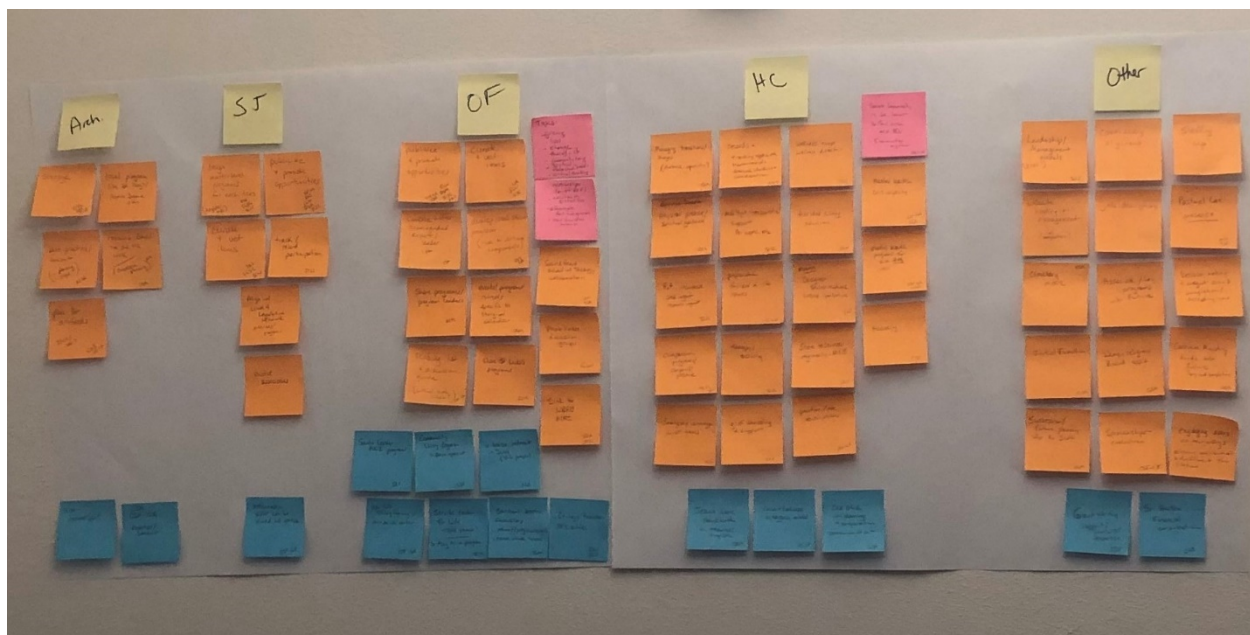
Process for Needs Assessment

- Survey Tool
- Guided Discussion

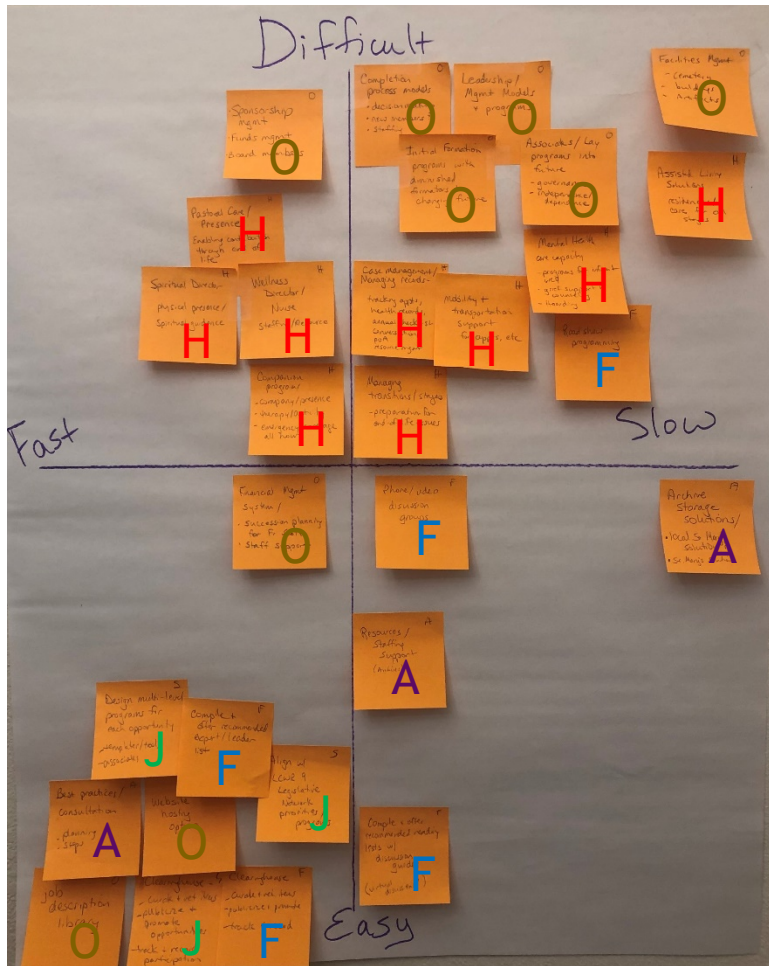
2019 Jul-Dec Roadmap

Process for Program Development Proposal

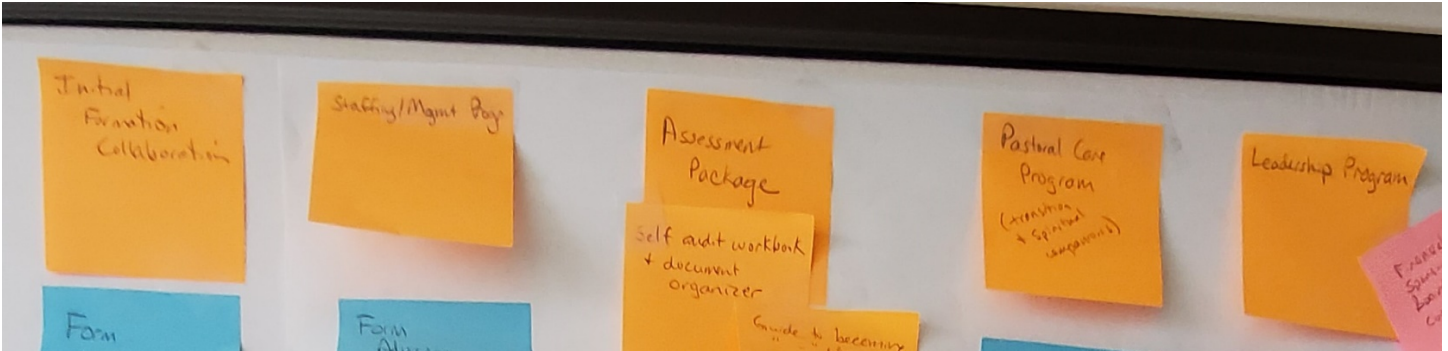
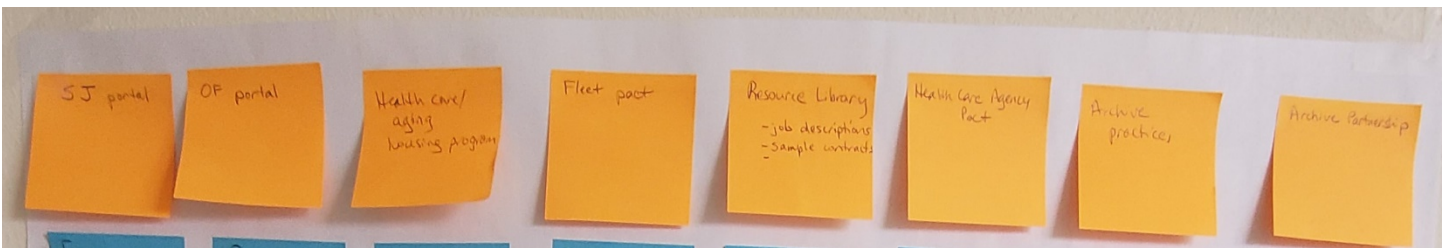
Step 1. Affinitize findings from Discovery Tour



Step 2. Plot grouped needs on fast/slow, difficult/easy matrix



Step 3: Turn needs into programs/products



Step 4: Develop Work Breakdown Structure for each program/product

Step 5: Build descriptions and roadmaps for each program with estimated time required for each step

Step	Activity	Incremental Steps	Target deadline	Status
Resource Library (15 weeks) Collection of tools and templates available at WRCollaborative.org, such as role descriptions, financial statements, policies, procedures, standards, best practices, links to other resource libraries.				
Features: -Easily downloadable guides and templates -Centralized, quick access to additional resources -Identification of endorses practices, procedures, and policies				
Benefits: -Simplify transition of roles and tasks from sisters to lay staff -Ensure best practices in place for optimum performance and efficiency -Consistency across institutes to aid in benchmarking/assessments and facilitate potential future partnerships				
1	Form Advisory Committee	Post call for volunteers Select and notify members Hold initial call (determine cadence)	3 weeks	
2	Develop list of desired tools	Itemize from discovery tour notes Send to committee for additions/edits	3 weeks	
3	Solicit samples and examples	Post call for submissions on website Solicit examples from members Pull examples from other resources, such as ASAE, etc.	4 weeks	
4	Develop web pages	Organize samples and post on website Include option to request new topic	2 weeks	
5	Develop member and non-member business models	Determine pricing and access model: member vs. nonmember	2 weeks	
6	Develop communication plan	Develop messaging language and access instructions Deploy via Communicators group and website	1 week	

Step 6: Complete [decision-making matrix](#) (Pugh Chart) to identify priorities

Decision Factors			Social Justice Portal	Ongoing Formation Portal	HCand Aging Housing Program	Fleet Collective	Resource Library	Health Care Agency Collective	Archives Practices	Archives Partnership	Staffing and Management Program	Pastoral Care Program	Leadership Program	Assessment Package	Initial Formation Collaboration
Criteria	Wt.	1	2	3	4	5	6	7	8	9	10	11	12	13	
Demand	3.0	4	4	2	2	4	3	3	3	4	5	4	5	1	
Urgency	3.0	2	3	3	1	4	4	2	1	4	5	2	5	2	
Ease of development	2.0	4	4	2	5	5	4	5	1	4	3	2	2	4	
Time to market	1.0	4	2	3	2	3	2	3	2	2	1	1	1	1	
Affordability	1.0	5	4	4	5	5	5	5	3	5	1	5	3	5	
Other options available	1.0	5	3	3	5	5	3	3	2	4	1	2	3	2	
Existing staffing capability	1.0	5	5	1	1	3	1	3	2	1	1	1	1	3	
Weighted Scores		45.0	43.0	30.0	32.0	50.0	40.0	39.0	23.0	44.0	40.0	31.0	42.0	28.0	

Step 7: Submit for Board consideration and feedback

Step 8: Form [Advisory Committees](#)