



Board of Directors and Leadership Meeting
May 2021

Via Zoom Conference

www.WRCollaborative.org

Mission

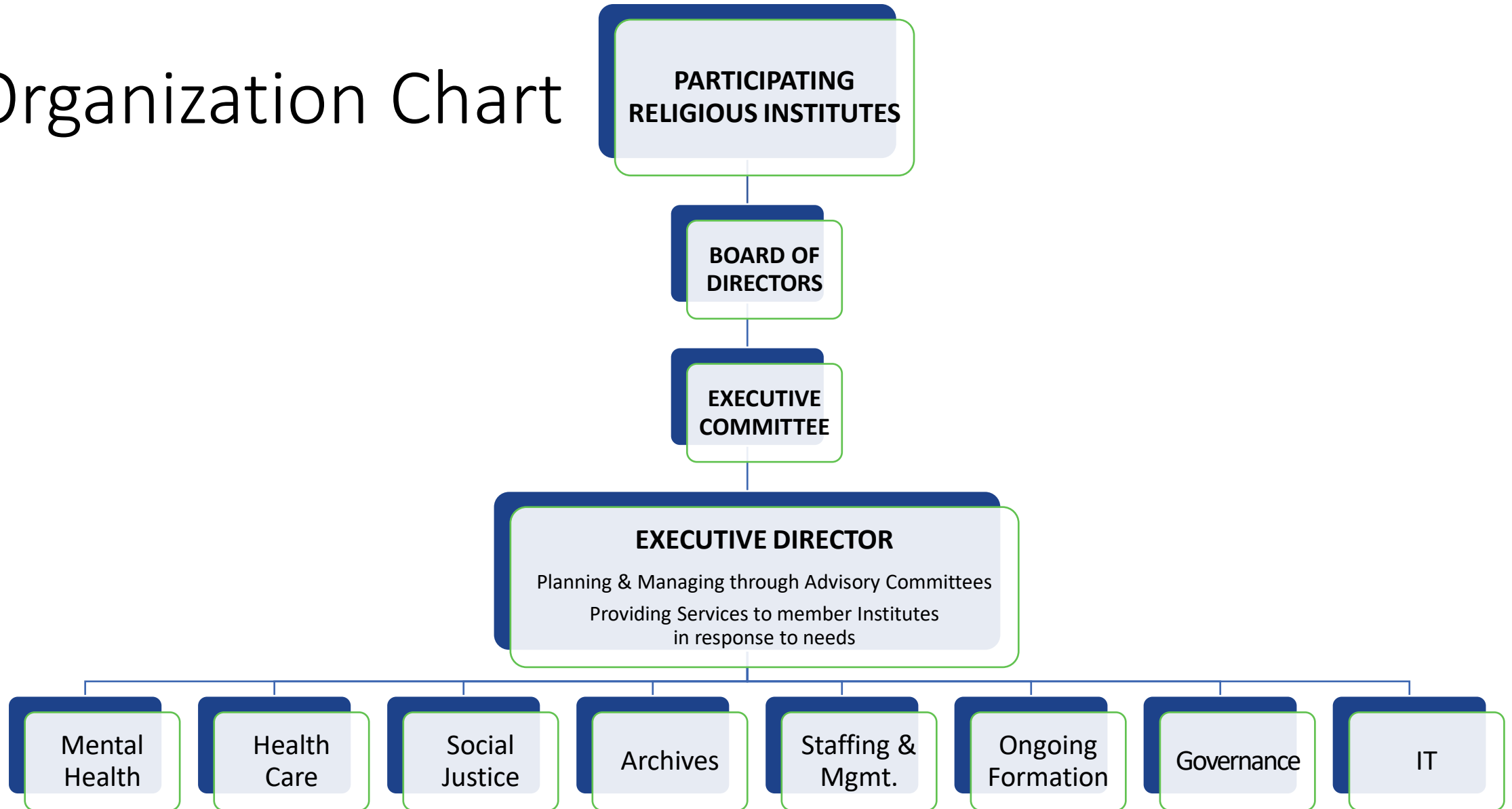
- The Wisconsin Religious Collaborative exists to provide a sustainable membership organization that promotes good stewardship by sharing resources and professional expertise in finance, management, pastoral care, governance, and other areas in order to sustain mission and meet the needs of individual religious institutes and their members.

Vision

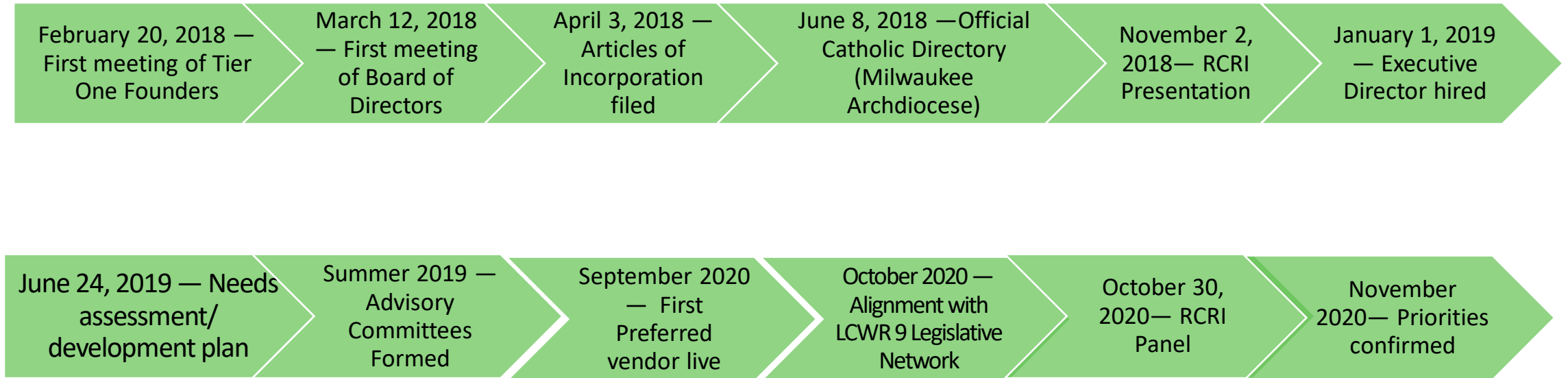
- It is our hope that developing a structure to foster collaboration in internal governance and management functions will allow leaders and members to give their energy, time, and attention to mission.



Organization Chart



Timeline



Needs Survey

Aggregate Ranking	Program or Service Area
26	Archives: Resources and future planning
24	Social Justice: Shared programming and opportunities
22	Mental Health: Resources and programs
20	Formation (ongoing and initial): Shared programming/opportunities
17	Pastoral Care: Resources and programs
17	Health Care: Resource management/negotiations
16	IT: Support, consultation
16	Facilities, Fleet: Resource management/negotiations
15	HR: Employee relations and management
10	Financial: Finance/accounting management and reporting
9	Ministries/Sponsorships: Resources and connections

Action Plan

Governance

- Collective resources and best practices
- Roundtables for information/idea sharing and exploration

Archives

- Assistance and best practices for managing current archives work
- Development of long-term regional collection solution

Social Justice

- Alignment with and participation in LCWR 9 Legislative Network

Mental Health

- Educational programming such as roundtables, webinars, print materials
- List of regional resources

Other

- Preferred vendors
- Continue information sharing and developing “network of networks”